

LAISIMO L3 200W CUSTOMIZE WALLPAPER GUIDE

1.Driver Installation Steps

System Requirement: windows 7/windows 8/windows 10 (Bit: 32bit or 64bit)

To our valued customers:

If your Security Software in your computer auto detected the software downloaded from our website as virus or Trojan horses,please add it to trusted software to avoid being deleted or isolated by your Security Software.

Please rest assured that our software is 100% safe and will not cause any threat to your computer or violate your privacy.

For 32bit:

Window7 click twice **Win7 32bit**  to install driver.

Window8/10 click twice **Win8 OR Win10 32bit** 



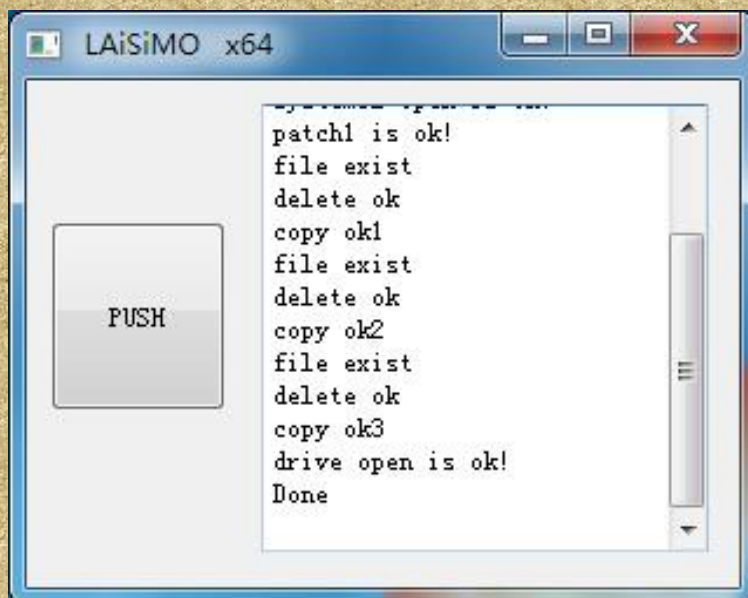
For 64bit:

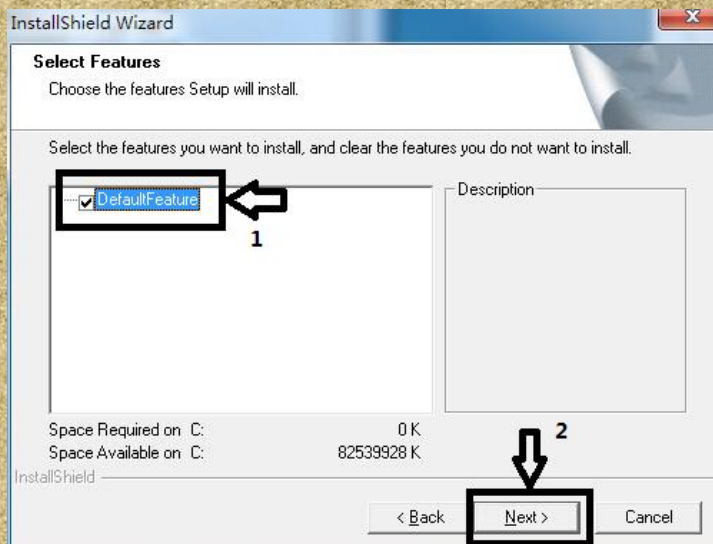
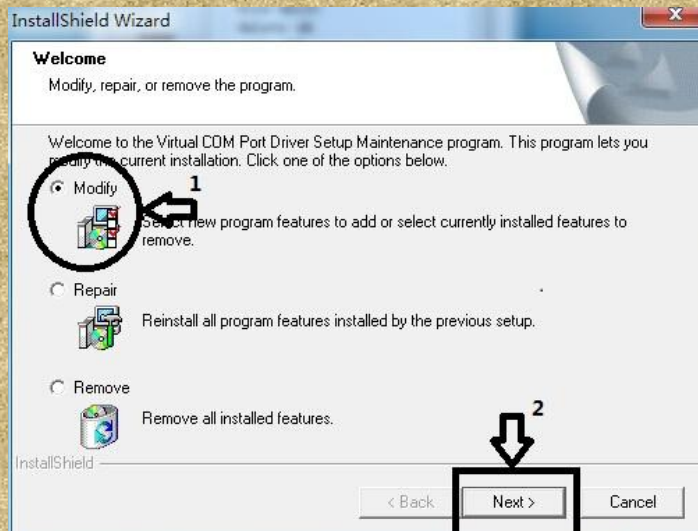
Window7 click twice **Win7 64bit**  to install driver.

Window8/10 click twice **Win8 OR Win10 64bit** 

Take Win7 64bit system as an example:

1.click twice Win7 64bit  Win7 64bit , then you will see the following pop-up window,click **PUSH** to do the following procedure.





When driver is installed, it is time to change wallpaper

2. Wallpaper Changing Instruction

First Step: Turn on your device L3

Second Step: Open the program:

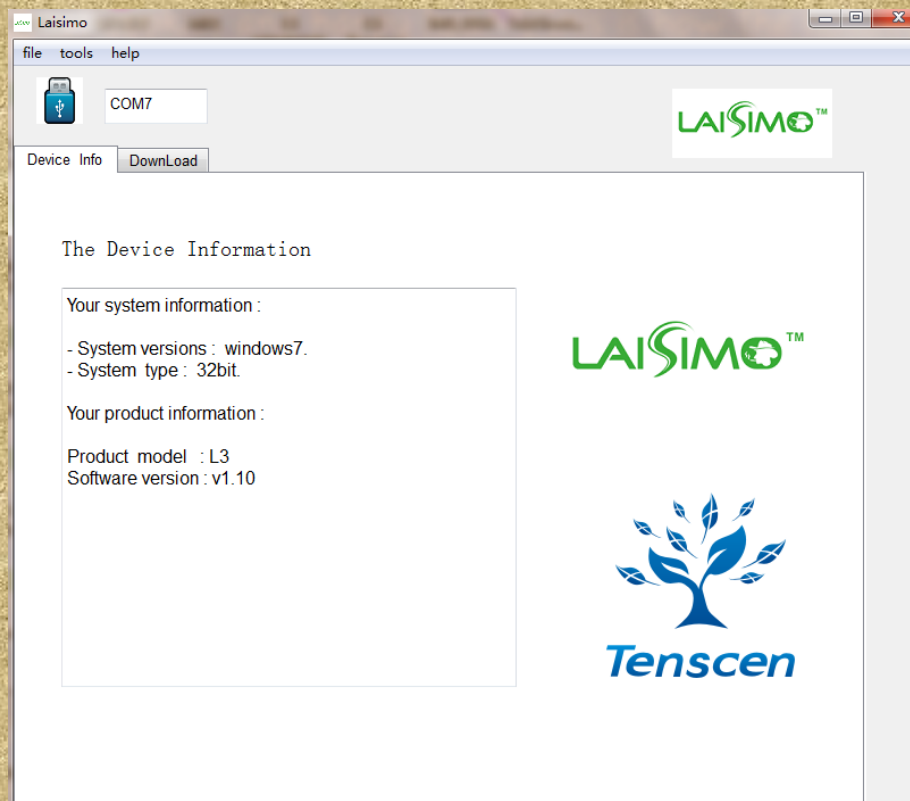
L3 Customized PIC PROGRAM

Third Step: connect your device with USB (please make the display light to ensure device can be recognized by your computer)

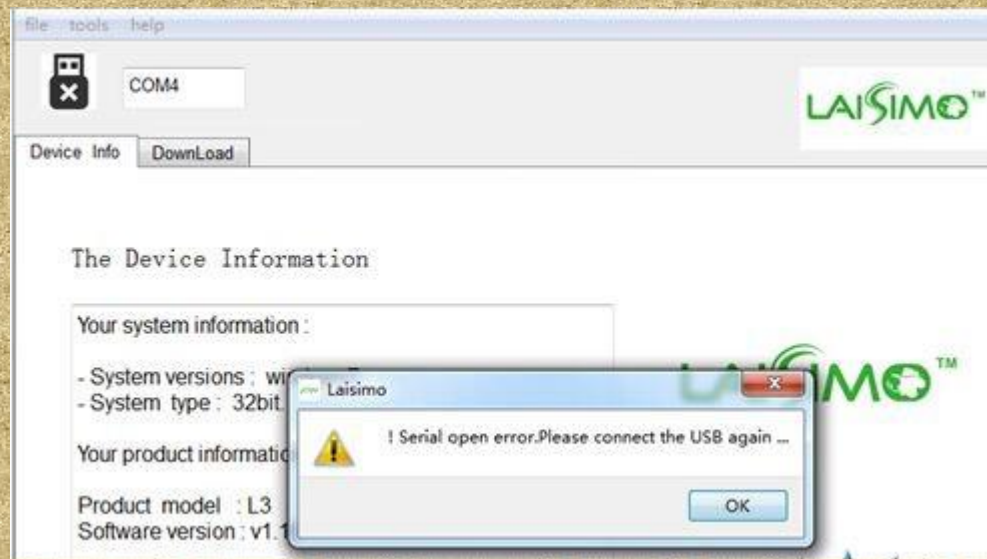
Note:Picture format must be in BMP format Bit Depth: 24

Main Steps:

1. After open the L3 Customized PIC PROGRAM, you will see the below window. Click **Device Info**. If it can read device info in the frame as COMx (X stands for the port No. identified by your computer), it means it is connected successfully.



Note: If it shows !Serial open error.Please connect the USB again,please restart your device.



2.Please do as the below pictures to change your wallpaper.

1st,click **PICTURE** and select the wallpaper in your computer you prefer to change.

2nd,Click **PIC NUM** and select among M2,M3,M4 and M5 to confirm the position of your wallpaper you want to put at.

3rd, click **UPDATE**.if it shows 100%,it means your wallpaper has been successfully installed in the device.

Slide into the second menu of **Display**, click **wallpaper**,you will find your wallpaper there.

